

GOOD DATA CAN HELP YOU...



- ✿ Write better funding proposals
- ✿ Design more innovative and community-responsive programs
- ✿ Develop more realistic baseline for program evaluation to document your outcomes
- ✿ Become a more powerful and persuasive advocate for your community
- ✿ Facilitate strategic planning and long-term organizational development efforts
- ✿ Create community buy-in for your program and organization
- ✿ Increase community involvement and voluntarism
- ✿ Develop grassroots leadership and strengthen existing community networks

Census Data & Geographic Information Services (CD&GIS)

Special Service for Groups
605 W. Olympic Blvd., Suite 740
Los Angeles, CA 90015
Phone (213) 553-1820
Fax (213) 553-1822
www.ssgmain.org

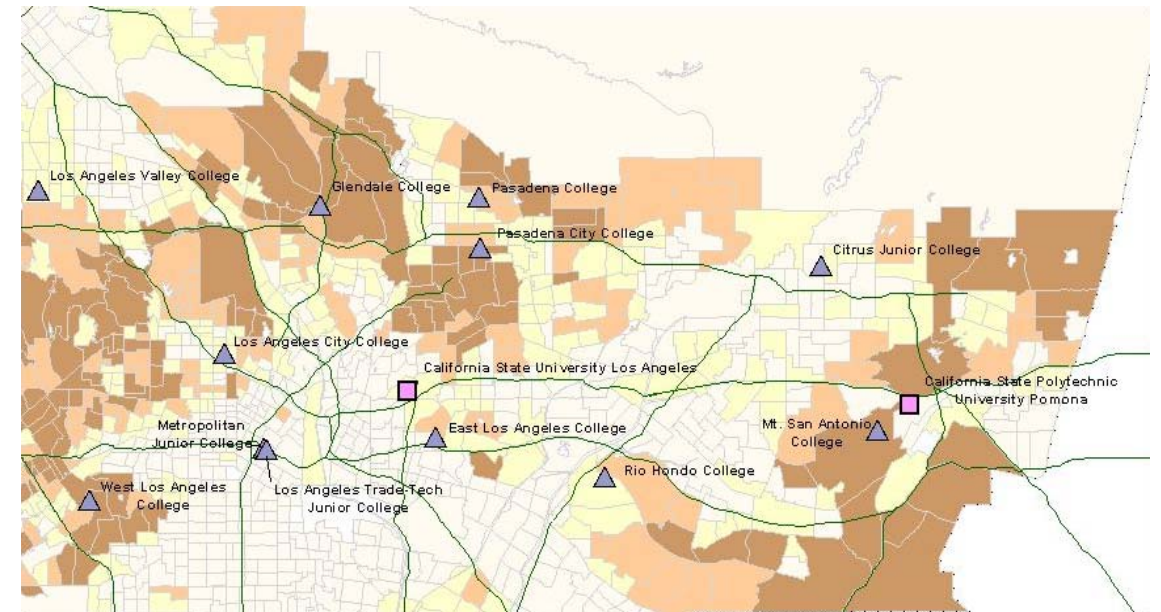
Staff

Eric C. Wat, *MA, Research Analyst*
Todd Zagurski, *MA, GIS Specialist*
Takuya Maruyama, *MS, Technical Advisor*



CENSUS DATA & GEOGRAPHIC INFORMATION SERVICES (CD&GIS)

A PROGRAM OF
Special Service for Groups (SSG)



**USING INFORMATION TO IMPROVE
THE EFFECTIVENESS OF
COMMUNITY-BASED ORGANIZATIONS
IN SOUTHERN CALIFORNIA**

CENSUS DATA & GEOGRAPHIC INFORMATION SERVICES (CD&GIS)

CD&GIS, a unique program of *Special Service for Groups*, is an “information broker” for underserved communities in Southern California. Accurate and up-to-date information can enhance an organization’s activities in program design and evaluation, resource development and grantwriting, organizational development and strategic planning, community engagement, policy advocacy, and grassroots leadership development.

CD&GIS helps community-based organizations and public agencies in accessing and using data in two ways:

First, CD&GIS is a designated “Census Information Center (CIC).” The CIC Program is a cooperative program between the U.S. Census Bureau and 59 national, regional, and local non-profit organizations. The CIC Program is specifically designed to address census data needs of underserved communities. As such, CD&GIS conducts community trainings and offer technical assistance on how to access and use Census data.

In addition to Census 2000 materials, the staff at CD&GIS have many years of experience in using other data sources and research methods. With this background we can provide research training and technical assistance that are tailored to the specific needs of individual organizations and communities.

Second, we believe that residents can be experts in their own communities. CD&GIS collaborates with organizations in involving residents and other stakeholders to collect and use information to improve their work. We can provide technical assistance in research and evaluation design, data collection, management, analysis, use and dissemination.

With our expertise in computer mapping, CD&GIS can provide various products that will give a powerful visualization to your data and make your presentation more convincing to funders, policymakers and local residents.

WHAT CAN CD&GIS DO FOR YOU?

Products

- Census 2000 and intercensal publications as they become available
- Specialized Profile Report Series on population, housing, social, and economic characteristics
- Customized GIS maps and reports on both existing and original data

Services

- Collaboration on community-based action **research and evaluation** projects that will increase community and organizational capacity or improve system coordination
- Consultation, technical assistance, and training tailored to agencies and their specific programs. We can help you with an information-gathering project from beginning to end:

Research Design (examples: How can a community need assessment help me? What do I need to do before starting an asset mapping project? What data are already available about my community?)

Data Collection (examples: What questions should I ask? Where should I go to get that information?)

Data Analysis (examples: What do all these numbers mean? How are they relevant to my work? How do I turn community anecdotes into research findings?)

Data Use and Dissemination (examples: How do I use this to improve the work of my agency? Who else needs to know this information?)

FOR A *FREE* CONSULTATION

Contact us for an appointment:

(213) 553-1820

ewat@ssgmain.org

